

# Quick Ohm™ v1.03



## User's Guide

Copyright © 2004 Creative Algorithms, LLC

# Table of Contents

Introduction.....	1
Software License.....	1
Trial Period.....	1
Using Quick Ohm™.....	2
Locks and Field Order.....	2
SI Unit Pop-up Lists.....	2
Drop-down Menu Items.....	2
Registering.....	4
Sharing the Program.....	5
Beaming the Program.....	5
Emailing the Program.....	5

## Introduction

Quick Ohm™ is an Ohm's Law calculator (whiz-wheel) for PalmOS® 2.0 and higher (including 5.0).

PalmOS and HotSync are registered trademarks of Palm, Inc. Palm is a trademark of Palm, Inc. Windows is a trademark of Microsoft Corp. Macintosh is a registered trademark of Apple Computer, Inc. Linux is a registered trademark of Linus Torvalds. RedHat is a registered trademark of RedHat, Inc. All other trademarks are the property of their respective owners.

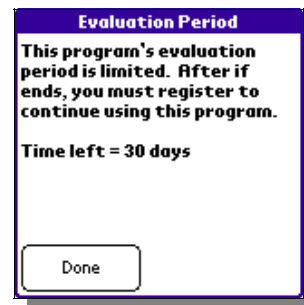
## Software License

The very first time that you launch the program, the License Agreement screen will appear. Before using the software, you must read, understand, and agree to the software license. The software license is available online and is included in the software package downloaded from the Creative Algorithms website.



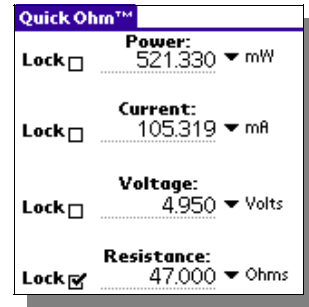
## Trial Period

The program may be evaluated for 30 days from the date of installation. After which, you must purchase a registration key to unlock the program and continue using it. Every time the program is launched, you will be shown the number of evaluation days remaining. This display will not appear once the program is registered.



## Using Quick Ohm™

When you launch the program, you will see the main screen:



### Locks and Field Order

Locks can be set to prevent changes to fields. This is useful for when you have a value that should not change.

Whenever a change is made to an unlocked field, and one of the other fields is locked, the other unlocked fields will update based on the value held in the locked field. For instance, if the “Voltage” field is locked, changing the “Resistance” field will affect the “Power” and “Current” fields.

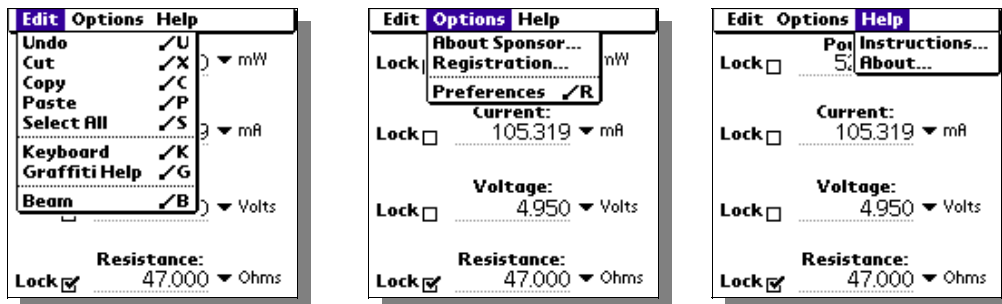
When all of the fields are unlocked, changing a field will update the oldest two fields. For example, changing “Resistance” field after changing the “Voltage” field will update the “Power” and “Current” fields because they are the oldest fields in this example.

### SI Unit Pop-up Lists

You can quickly set the units for any of the four fields by using the pop-up lists. Simply tap on the pop-up area, and then tap on the units you want.

### Drop-down Menu Items

These screen shots illustrate the drop-down menu items accessible from the program:



Undo/Cut/Copy/Paste/SelectAll/Keyboard/Graffiti Help:  
Performs the selected action on the active field.

Beam:

Beams the program to other user's via the infrared port. See the "Sharing the Program" section for more information.

About Sponsor...:

Displays information about the program's sponsor.

Registration...:

If registered, this displays information about to whom the program is registered. Otherwise, it displays instructions for registering the program and accepting the registration key.

Preferences...:

Shows the preferences screen that allows changes to the program's behavior.

When checked, the "Flash calculated fields" check-box causes the program to briefly highlight a field when it is changed as a result of another field changing.

The "Auto-ranging" check-box enables the program to automatically adjust the units of updated fields so their values fit. If unchecked, the units must be manually set using the pop-up lists.



Instructions...:

Shows quick tips for using the program.

About...:

Displays the program version.

## Registering

Registration keys may be purchased on-line at <http://www.creativealgorithms.com>.

To begin the registration process, Launch the program. If the program has already expired, you will see the registration screen automatically. Otherwise, you will need to tap the menu button and select the “Registration...” menu item from the “Options” drop-down menu. The “Registration Instructions” screen will appear.



Note your PDA HotSync® user name displayed at the bottom. You will need to enter your user name exactly when purchasing and registering the program. Tap the “Done” button and then the “Cancel” button.

Open the following URL in your Internet browser:

<http://www.creativealgorithms.com/products.html>.

Then add the program to your shopping cart. Follow the PayPal™ instructions for checking out. Be careful to enter your PDA HotSync® user name exactly when checking out. Otherwise, the registration key will not work. After PayPal™ has confirmed your payment, your registration key will be emailed to you.

Once you have your registration key, launch the program. If the program has already expired, you will see the registration screen automatically. Otherwise, you will need to select “Registration...” from the drop-down menu.

Tap the “Done” button. The registration key entry screen will appear. Enter the code that was emailed to you. Be careful to enter the code exactly as it appears in the email. Tap the “OK” button when you are finished. If you have entered the code correctly you will see the confirmation screen. The program is now unlocked and registered to you.



## Sharing the Program

You can share the program with another Palm user either by “beaming” the program to them or by emailing it to them. You may not, however, share any registration key codes or coupon codes with them.

### *Beaming the Program*

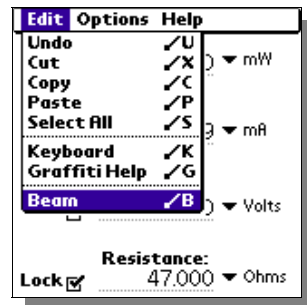
Press the “APPLICATIONS” button on the Palm™ device. The application launcher screen should appear. Tap the menu button to activate the drop-down menu. Select the “Beam” menu item.



Then, select the program from the list of available programs. Follow the manufacturer's instructions for beaming programs.



You can also beam the program while it is running by selecting the “Beam ...” menu item from the drop-down menu:



### *Emailing the Program*

The best way to email the program is to email a link to the program. Copy the following link and paste it into your email:

<http://www.creativealgorithms.com/quickohm.html>